

## INSIDE THIS ISSUE

Nepomniachtchi - Anand	2
Nakamura - Caruana	4
Liren - So	5
Carlsen - Giri	6
Aronian - Vachier-Lagrave	7
Karjakin - Mamedyarov	8
Current Standings	11
Round 2 Pairings	11
Schedule of Events	12

## ROUND 1 RESULTS

♔ GM I. Nepomniachtchi	0
♚ GM V. Anand	1
♔ GM H. Nakamura	1/2
♚ GM F. Caruana	1/2
♔ GM D. Liren	1/2
♚ GM W. So	1/2
♔ GM M. Carlsen	1/2
♚ GM A. Giri	1/2
♔ GM L. Aronian	1/2
♚ GM M. Vachier-Lagrave	1/2
♔ GM S. Karjakin	1/2
♚ GM S. Mamedyarov	1/2

## CURRENT STANDINGS

1. GM V. Anand	1
2. GM L. Aronian	1/2
3. GM S. Mamedyarov	1/2
4. GM S. Karjakin	1/2
5. GM M. Carlsen	1/2
6. GM A. Giri	1/2
7. GM W. So	1/2
8. GM D. Liren	1/2
9. GM F. Caruana	1/2
10. GM H. Nakamura	1/2
11. GM M. Vachier-Lagrave	1/2
12. GM I. Nepomniachtchi	0

# CUP★CHRONICLE

SUNDAY, AUGUST 18, 2019 | ISSUE 1

## ROUND 1 HIGHLIGHTS

BY WGM TATEV ABRAHAMYAN



GM IAN NEPOMNIACHTCHI, ROUND 1  
PHOTO BY JUSTIN KELLAR

The 2019 Sinquefield Cup was off to a slow start with only one decisive result, a definite change of pace after the action-packed Saint Louis Rapid and Blitz. Seven of the twelve players were returning to action after a short break from the rapid and blitz event and were pleased with the peaceful result to start off the tournament. The only victor of the round was former World Champion Viswanathan Anand, who was on the receiving end of some luck. Anand had already accepted that the long endgame grind would end in a draw, when an unexpected blunder gave him the full point. "I'll take it", was the former World Champion's response to the question about his feelings towards such wins. After the round, he was greeted by a large crowd and generously spent some time signing autographs.



**GRAND CHESS TOUR™**  
GRANDCHESSTOUR.ORG | @STLCHESSCLUB  
@GRANDCHESSTOUR | #SINQUEFIELDCUP

**CS Saint Louis**  
CHESS CLUB



IAN NEPOMNIACHTCHI - VISWANATHAN ANAND

BY WGM TATEV ABRAHAMYAN, ANALYSIS BY GM CRISTIAN CHIRILA



The epic battle came to a dramatic end on move 77 when Nepomniachtchi blundered his rook in a simple tactic, most likely overlooking that his en passant capture would be met with a recapture with a check . After outplaying his opponent slowly, Anand reached a much better endgame where Nepomniachtchi had a dark squared bishop which was stuck defending the pawns on the dark squares on the kingside. Nepomniachtchi defending relentlessly, exhausting every resource in the position. He eventually gave up his bishop for his opponent's passed pawn, being left with a rook and a pawn against Anand's rook, knight and pawn. The final position where he blundered was already almost drawn, with Anand expecting to shake hands after few more accurate moves. In fact, Anand was ready to offer a draw 10 moves before the unfortunate mistake, had it not been for the "no draw offers allowed" rule in the event.

1.c4 e5 2.Nc3 Bb4 3.Nd5 Be7!? [3... Bc5 is Black's main option. Retreating all the way to e7 seems artificial, yet subtly useful. Black keeps his dark square bishop close to his camp and will use it as a strong defending piece in the future.]

4.Nf3 d6 5.d4 Nf6 [5...e4!? 6.Nd2 f5

GM V. ANAND // CRYSTAL FULLER  
(6...c6 7.Nxe7 Qxe7 8.e3 Nf6 9.b4?) 7.e3 Nf6 8.Nxe7 Qxe7 9.b4? White's dark square bishop is going to be extremely powerful if the a1-h8 diagonal opens up, which doesn't seem to be far from happening.]

6.Nc3 exd4 7.Nxd4 d5 8.Bf4 0-0 9.e3 a6 10.Nf3 [Black steps away from Black's ...c5 threat.]

10...c6 [10...Be6 11.Ng5 c6 12.Qc2 b5 13.Bd3 h6 14.Nxe6 fxe6 15.cxd5 cxd5 16.0-0?]

11.cxd5 Nxd5 12.Nxd5 Qxd5 13.Qxd5 cxd5 14.0-0-0 Nc6 15.Bg5?! [A very strange move to understand. Black's plan is generally to take away White's knight's squares by playing f6; White only plays into Black's hands with this move.]

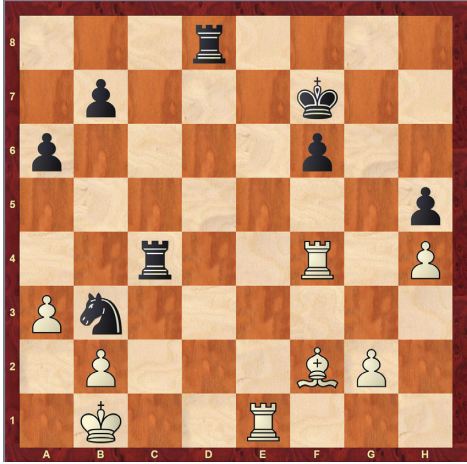
15...f6 16.Bf4 Be6 17.Kb1 Rac8 18.a3 Rfd8 19.Bd3 Bc5 20.Rhe1 Kf7 21.Bg3 Bb6 22.Bc2 h5 23.h3 Ne7 24.Bb3 g5!? [Black takes matters in his own hands!]

25.h4 [25.Nd4 Bxd4 26.Rxd4 b5 27.Bh2 Nc6 28.Rd2 Na5? Black has the upper hand due to his active pieces and innactive white B on h2]

25...g4 26.Nd4 Bxd4 27.Rxd4 Nc6

28.Rf4 d4 29.Bxe6+ Kxe6 30.exd4+ Kf7 31.f3 gxf3 32.Rxf3 Nxd4 33.Rf4 Ne6 34.Rf3 Nd4 35.Rf4 Nb3? [White has a lot of weaknesses on the kingside, while Black is comfortably going to use combinations to bring his pieces closer to the action]

36.Bf2 Rc4! 37.Rxc4 Nd2+ 38.Kc2 Nxc4 39.Re2 Ne5 [Now Black's king will penetrate the kingside]



40.Be1 Ke6 41.a4 Rd6 42.g3 Kf5 43.Rf2+ Kg4 44.Rf4+ Kh3 45.Rf1?! [A very strange decision, the easiest way of continuing was]

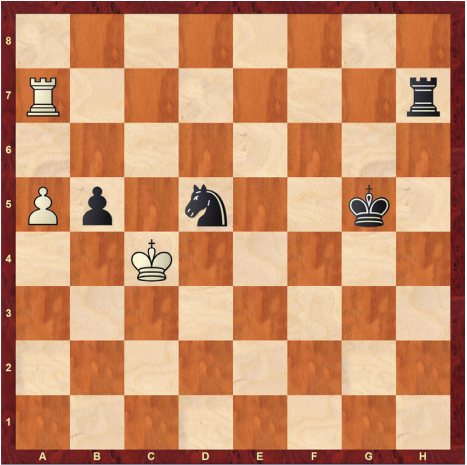
[45.Rf5 Kg4 46.Rf4+ Kh3 47.Rf5=]

45...Rc6+ 46.Kb1 Re6 47.Rf5 Ng6 48.Bf2 Kg4 49.Rd5 Ne5 50.Rd4+ [50. Kc2 Kf3 51.Be1 Nc4 52.Rf5+ Kg4 53.Rf4+ Kh3?]

50...Kh3 51.Rd5 Re7 52.Kc2 Ng4 53.Bb6 Rh7 54.Rd3 Ne5 55.Rb3 Rd7 56.Be3 Nf3 57.Rb6 Kxg3 58.Rxf6 Nxe4 59.b4 Ng2 60.Ba7 h4 61.Kc3 h3 62.Bb8+ Kg4 63.Rg6+ Kh5 64.Rg8 Ne3 65.Rg3 [65.b5! was another way of simplifying the game and force the theoretical equality 65...a5 (65...axb5 66.axb5 Nf5 67.Kb4 b6 68.Kc4 Rd4+ 69.Kc3 Rh4 70.Bh2= White looks to have enough resources to force the exchange of the b pawns) 66.Rg3 Nd5+ 67.Kc4 Kh4 68.Rg6 Kh5 69.Rg3 Nb6+ 70.Kb3 Kh4 71.Rg6=]

65...Nd5+ 66.Kb3 Kh4 67.Rg8 Nf6 68.Rg6 Ng4 69.Rg8 Rh7 70.Kc4 h2 71.Bxh2 Nxe2 72.b5! [White needs to start chopping the pawns down.]

72...Ng4 73.Ra8 axb5+ 74.Kxb5 Nf6 75.a5 Nd5 76.Ra7 Kg5 77.Kc4?? [And the tragic blunder comes in the last moment of the round. White was one pair of moves away from exchanging the last pawn and forcing the theoretical R+N vs R draw.]



[77.Kc5! Rd7 78.Ra8 Kf6 79.a6 bxa6 80.Rxa6+]

77...b5+!

0-1



NEPOMNIACHTCHI VS. ANAND // AUSTIN FULLER



HIKARU NAKAMURA - FABIANO CARUANA

BY WGM TATEV ABRAHAMYAN



This duo followed the game that transpired between Caruana and Carlsen in Zagreb. Nakamura spent some time contemplating whether he should repeat the line Caruana played with white, but decided to deviate on move 10. Nakamura had the superior pawn structure and the better minor piece. Caruana felt that his position was unpleasant and he was on the worse side of equality, while Nakamura thought that the game was closer to equal and Caruana misplayed it and made his defense slightly more difficult. Ultimately, Nakamura did not see a way to keep improving his position and a draw was reached with a repetition.

- 1.e4 e5
- 2.Nf3 Nc6
- 3.Bb5 a6
- 4.Ba4 Nf6
- 5.0-0 Nxe4
- 6.d4 Be7
- 7.Re1 b5

- 8.Rxe4 d5
- 9.Nxe5 Nxe5
- 10.Rxe5 bxa4
- 11.b3 Be6
- 12.Ba3 Bxa3
- 13.Nxa3 0-0
- 14.Nb1 Qd6
- 15.Nc3 axb3
- 16.axb3 c5
- 17.Ne2 f6
- 18.Re3 c4
- 19.Ng3 cxb3
- 20.cxb3 g6
- 21.Qf3 Bf7
- 22.h3 Rfe8
- 23.Rxe8+ Rxe8
- 24.Qd3 Re6
- 25.Nf1 Qb6
- 26.Ne3 Rc6
- 27.h4 Kg7
- 28.h5 Qb4
- 29.Ng4 Be6
- 30.h6+ Kf7
- 31.Ne3 a5

GM H. NAKAMURA // AUSTIN FULLER

- 32.Qd1 Rc3
- 33.Ra4 Qxb3
- 34.Qxb3 Rxb3
- 35.Rxa5 g5
- 36.Ra7+ Kg6
- 37.Ra6 Kf7
- 38.g4 Rb4
- 39.Ra7+ Kg6
- 40.Ra6 Kf7
- 41.Ra7+ Kg6
- 42.Ra6 Kf7
- 43.Ra7+

1/2-1/2

DING LIREN - WESLEY SO

BY WGM TATEV ABRAHAMYAN



LIREN VS. SO // CRYSTAL FULLER

The players followed a theoretical path in the Open Catalan, in a line that So is well versed in, having played it four times before. The critical moment of the game occurred on move 26. So decided to simplify the position via tactical means, offering a pawn in the process. Ding Liren opted out for a different variation attempting to take advantage of his opponent's vulnerable back rank, calculating a forced line which would have left him with an extra pawn. He missed Black's 27...h6 move, which gave the king an escape square, thus stopping all the mate threats. After the queens and a set of rooks came off the board, draw was agreed.

- 1.c4 Nf6
- 2.g3 e6
- 3.Bg2 d5
- 4.Nf3 Be7
- 5.0-0 0-0
- 6.d4 dxc4
- 7.Qc2 a6
- 8.a4 c5
- 9.dxc5 Bxc5
- 10.Qxc4 b6
- 11.Ne5 Ra7
- 12.Nd3 Be7
- 13.Bf4 Bb7
- 14.Bxb7 Rxb7
- 15.Rc1 Nd5

- 16.Be5 Bd6
- 17.Nd2 Bxe5
- 18.Nxe5 b5
- 19.Qd4 bxa4
- 20.Rxa4 Qb6
- 21.Nd3 Rd8
- 22.Ne4 Nd7
- 23.Nec5 Nxc5
- 24.Rxc5 Nf4
- 25.Qxf4 Rxd3
- 26.Rc8+ Rd8
- 27.Rac4 h6
- 28.R4c6 Rxc8
- 29.Rxc8+ Kh7
- 30.Qe4+ f5
- 31.Qc4 Qb3
- 32.Qxb3 Rxb3
- 33.Rc6 Rxb2
- 34.Rxe6 a5
- 35.Ra6 Rxe2
- 36.Rxa5 Kg6
- 37.Ra6+ Kh7
- 38.Ra5 Kg6
- 39.Ra6+ Kh7
- 40.Ra5

1/2-1/2



MAGNUS CARLSEN - ANISH GIRI

BY WGM TATEV ABRAHAMYAN



CARLSEN VS. GIRI // AUSTIN FULLER

After a difficult Saint Louis Rapid and Blitz, the World Champion was pleased with his solid start at the Sinquefeld Cup. The game started with the English Opening but resembled a Giuoco Piano structure in the middle game with the players exchanging three sets of minor pieces but no pawns. After a breakthrough in the center and some more simplifications, Giri temporarily sacrificed a pawn in order to exchange the queens and enter an equal rook endgame. Draw was agreed on move 36.

- 1.c4 Nf6
- 2.Nc3 e5
- 3.Nf3 Nc6
- 4.e4 Bb4
- 5.d3 d6
- 6.Be2 Bg4
- 7.a3 Bc5
- 8.b4 Bb6
- 9.Be3 Bxf3
- 10.Bxf3 Nd4
- 11.Na4 Nxf3+
- 12.Qxf3 Bxe3
- 13.Qxe3 0-0
- 14.0-0 Re8
- 15.Nc3 a5
- 16.b5 c6
- 17.Rab1 d5
- 18.Na4 Qe7

- 19.bxc6 bxc6
- 20.cxd5 cxd5
- 21.Nb6 Rad8
- 22.Rb5 Qxa3
- 23.exd5 e4
- 24.dxe4 Qxe3
- 25.fxe3 Rxe4
- 26.Rxa5 Rb4
- 27.Ra8 Rxa8
- 28.Nxa8 Nxd5
- 29.Rd1 Rb8
- 30.Rxd5 Rxa8
- 31.Kf2 Kf8
- 32.Kf3 h6
- 33.Kf2 Ra2+
- 34.Kf3 Ra8
- 35.Kf2 Ra2+
- 36.Kf3 Ra8

1/2-1/2

LEVON ARONIAN - MAXIME VACHIER-LAGRAVE

BY WGM TATEV ABRAHAMYAN



GM LEVON ARONIAN // AUSTIN FULLER

This strategically fascinating battle came to an abrupt end with a threefold repetition. Aronian opted for a sideline in the 1.d4 opening, reaching a new position after 10 moves. In the postgame interview, the winner of this year's Saint Louis Rapid and Blitz admitted that he did not understand the position. He also explained the difficulty of playing a classical event after one with quick time control as it puts one in a mood to play faster. Aronian felt that he was better when the engines gave clear preference to the black pieces. Vachier-Lagrave also did not think that he had an edge, and did not decline the repetition.

- 1.d4 Nf6
- 2.Nf3 g6
- 3.Nbd2 d5
- 4.e3 Bg7
- 5.b4 a5
- 6.b5 c5
- 7.bxc6 Nxc6

- 8.Be2 0-0
- 9.0-0 Bf5
- 10.c3 Qc7
- 11.a4 e5
- 12.Ba3 Rfc8
- 13.Rc1 e4
- 14.Nh4 Be6
- 15.g3 g5
- 16.Ng2 Qd7
- 17.f3 exf3
- 18.Bxf3 Bf5
- 19.Qb3 Bd3
- 20.Rf2 Qe6
- 21.Qd1 b6
- 22.Nf1 Be4
- 23.Nd2 Bd3
- 24.Nf1 Be4
- 25.Nd2 Bd3

1/2-1/2



# SERGEY KARJAKIN - SHAKHRIYAR MAMEDYAROV

BY WGM TATEV ABRAHAMYAN



GM SERGEY KARJAKIN // LENNART OOTES

Here Mamedyarov essayed the Scandinavian Defense, a rare opening at the top level, but one he has used before. These players followed the game between Caruana and Mamedyarov which was played in Zagreb. Karjakin deviated on move 10, allowing his opponent to neutralize the position with a lot of piece exchanges. By move 21, the game had petered out into a drawn rook and knight endgame and ended with a draw after the knights were exchanged as well.

- 1.e4 d5
- 2.exd5 Qxd5
- 3.Nc3 Qa5
- 4.d4 Nf6
- 5.Nf3 Bf5
- 6.Bd2 e6
- 7.Bc4 Bb4
- 8.a3 Bxc3
- 9.Bxc3 Qb6
- 10.d5 exd5
- 11.Bxd5 Be6
- 12.Bxe6 Qxe6+

- 13.Qe2 Qxe2+
- 14.Kxe2 Nbd7
- 15.Rhe1 0-0-0
- 16.Kf1 h6
- 17.Re7 Rhf8
- 18.Bxf6 Nxf6
- 19.Ne5 Rfe8
- 20.Rxe8 Rxe8
- 21.Nxf7 Ng4
- 22.f3 Ne3+
- 23.Kf2 Nxc2
- 24.Rc1 Re7
- 25.Rxc2 Rxf7
- 26.Ke3 Kd7
- 27.Rd2+ Ke7
- 28.Rc2 Kd7
- 29.Rd2+ Ke7
- 30.Rc2 Kd7
- 31.Rd2+

1/2-1/2



ROUND 1 OF THE 2019 SINQUEFIELD CUP // AUSTIN FULLER





CARLSEN VS. GIRI // LENNART OOTES



GM VISWANATHAN ANAND & MAURICE ASHLEY // LENNART OOTES

CURRENT STANDINGS					AFTER ROUND 1	
#GrandChessTour						
POS.	PLAYER		ROUND 1 RESULT	SCORE		
1	GM VISWANATHAN ANAND	IND	1	1 PT		
T-2	GM LEVON ARONIAN	ARM	1/2	1/2 PTS		
T-2	GM S. MAMEDYAROV	AZE	1/2	1/2 PTS		
T-2	GM SERGEY KARJAKIN	RUS	1/2	1/2 PTS		
T-2	GM MAGNUS CARLSEN	NOR	1/2	1/2 PTS		
T-2	GM ANISH GIRI	NLD	1/2	1/2 PTS		
T-2	GM WESLEY SO	USA	1/2	1/2 PTS		
T-2	GM DING LIREN	CHN	1/2	1/2 PTS		
T-2	GM FABIANO CARUANA	USA	1/2	1/2 PTS		
T-2	GM HIKARU NAKAMURA	USA	1/2	1/2 PTS		
T-2	GM M. VACHIER-LAGRAVE	FRA	1/2	1/2 PTS		
12	GM IAN NEPOMNIACHTCHI	RUS	0	0 PTS		

PLAYER MATCHUPS					ROUND 2	
#GrandChessTour						
WHITE	PLAYER	VS	PLAYER	BLACK		
	GM SERGEY KARJAKIN	RUS		GM DING LIREN	CHN	
	GM SHAKHRIYAR MAMEDYAROV	AZE		GM HIKARU NAKAMURA	USA	
	GM FABIANO CARUANA	USA		GM IAN NEPOMNIACHTCHI	RUS	
	GM VISWANATHAN ANAND	IND		GM MAGNUS CARLSEN	NOR	
	GM ANISH GIRI	NLD		GM LEVON ARONIAN	ARM	
	GM MAXIME VACHIER-LAGRAVE	FRA		GM WESLEY SO	USA	

SPONSORED BY:

explore **st.louis**



## ULTIMATE MOVES

AUGUST 29

Following the conclusion of the Sinquefield Cup, the Saint Louis Chess Club will host an Ultimate Moves Exhibition with all players on August 29 at 2pm. The event will include Saint Louis Chess Club founder Rex Sinquefield, President of Spectrum Studios Randy Sinquefield, legendary World Champion Garry Kasparov, and the Sinquefield Cup players in a team vs. team matchup. All tournament players will compete in this fun-spirited event where players swap out after every fifth move and are encouraged to talk amongst each other and their opponents throughout the match. Free admission!



2018 ULTIMATE MOVES // AUSTIN FULLER

## SCHEDULE OF EVENTS

**Thursday, August 15**

**5-6 PM** Autograph Session, Kingside Diner

**Thursday, August 15**

**6 PM** Opening Ceremony, World Chess Hall of Fame\*

**Saturday, August 17**

**1 PM** Round 1

**Sunday, August 18**

**1 PM** Round 2

**Monday, August 19**

**1 PM** Round 3

**Tuesday, August 20**

**1 PM** Round 4

**Wednesday, August 21**

**1 PM** Round 5

**Thursday, August 22**

Rest Day

**Friday, August 23**

**1 PM** Round 6

**Saturday, August 24**

**1 PM** Round 7

**Sunday, August 25**

**1 PM** Round 8

**Monday, August 26**

**1 PM** Round 9

**Tuesday, August 27**

**1 PM** Round 10

**Wednesday, August 28**

**1 PM** Round 11

**Thursday, August 29**

**10 AM** Playoff (If Necessary)

**Thursday, August 29**

**2 PM** Ultimate Moves

**Thursday, August 29**

**6-7 PM** Closing Ceremony, World Chess Hall of Fame\*

\*Private Event

## SIDE EVENT HIGHLIGHT

### Sinquefield Action Quads

**FRIDAY, AUGUST 30**

3 Rounds | Game in 20; 3 second delay

**Entry Fee**

\$10

**Registration**

6-6:50 PM

Space is limited to the first 50 players.

**Round 1**

7:00 PM

**Winner of each quad receives \$36.**

Quick Ratings will be used for Pairings and Prize purposes.

Free Entry for GMs and IMs. USCF membership required.

Arbiter has the discretion to appoint ratings.