

INSIDE THIS ISSUE:

Aronian - Caruana	2
Vachier-Lagrave - Svidler	3
Nakamura - Topalov	4
Liren - Anand	5
So - Giri	6
Crosstable	7
Pairings Round 5	8
Schedule of Events	8

CUP ★ CHRONICLE

TUESDAY, AUGUST 9, 2016 | ISSUE 4

ROUND 4 HIGHLIGHTS

By WGM Tatev Abrahamyan



GM Svidler examines GM Liren's game during Round 4// Austin Fuller

ROUND 3 RESULTS:

<input type="checkbox"/> GM Levon Aronian	1/2
<input checked="" type="checkbox"/> GM Fabiano Caruana	1/2
<input type="checkbox"/> GM M.Vachier-Lagrave	1/2
<input checked="" type="checkbox"/> GM Peter Svidler	1/2
<input type="checkbox"/> GM Hikaru Nakamura	1/2
<input checked="" type="checkbox"/> GM Veselin Topalov	1/2
<input type="checkbox"/> GM Ding Liren	1/2
<input checked="" type="checkbox"/> GM Viswanathan Anand	1/2
<input type="checkbox"/> GM Wesley So	1/2
<input checked="" type="checkbox"/> GM Anish Giri	1/2

CURRENT STANDINGS:

1 GM Levon Aronian	2 1/2
2 GM Wesley So	2 1/2
3 GM Viswanathan Anand	2 1/2
4 GM Veselin Topalov	2 1/2
5 GM Hikaru Nakamura	2
6 GM Fabiano Caruana	2
7 GM Ding Liren	2
8 GM M.Vachier-Lagrave	1 1/2
9 GM Anish Giri	1 1/2
10 GM Peter Svidler	1

It appears that even chess players are not fans of Mondays, as round 4 of the 2016 Sinquefield Cup saw five quiet draws. Levon Aronian and Fabiano Caruana drew very quickly, as the former was ill and did not feel up to the task. The game between Hikaru Nakamura and Veselin Topalov was the only one with any fireworks with an early queen sacrifice, but it was unfortunately mishandled later on. The rest of the games were quite balanced, with the players trading off most of the pieces and heading into drawn endgames. Aronian, Anand, So and Topalov are tied for the lead with 2.5/4.



GRAND CHESS TOUR™
2016

GM LEVON ARONIAN - FABIANO CARUANA 1/2 - 1/2

By WGM Tatev Abrahamyan

Levon Aronian was feeling ill before the game and was actually considering asking the organizers to postpone the game, but felt that would be unfair. He was eager to end the game and recover but said he's ready to fight once he regains his health. Fabiano Caruana can't complain about an easy draw with the black pieces. In the postgame interview, he jokingly explained that he keeps getting bad positions in the solid Queen's Gambit Declined, so he decided to try the sharper and less popular Benoni. Caruana learned that Aronian was not feeling well 10 minutes before the game, but it didn't change his attitude. The game was over in half an hour.

1.d4 Nf6 2.c4 e6 3.Nf3 c5 4.e3 a6 5.Nc3 d5 6.cxd5 exd5 7.g3 [Aronian himself has faced this move against Kramnik in 2010] [7.Be2 the more standard move in the opening] 7... Nc6 [7...Bg4 Diagram 1



Diagram 1

8.Bg2 cxd4 9.exd4 Bb4 10.0-0 0-0 11.h3 Be6 12.Ne5 Bxc3 13.bxc3 Qc8 14.g4 Qxc3 15.Rb1 Nc6 16.Rb3 Qa5 17.Rxb7 Nxe5 18.dxe5 Ne4 19.f4 Nc3 20.Qd2 d4 21.f5 Bc4 22.Re1 Qxa2 23.Rb2 Qa1 24.f6 1-0 (24) Kramnik,V (2790)-Aronian,L (2782) Nice 2010] **8.Bg2 Bd6 9.dxc5 Bxc5 10.0-0 0-0 11.Nd4** [equalizes right away][11.b3 Diagram 2 is a try to keep the game going and has been played by Kramnik 11...Be6 12.Bb2 Qe7 13.Rc1 Rac8 14.Qd3 Rfd8 15.Ne2 Ba3 16.Qb1 Ne4 17.Qa1 Bg4 18.Ned4 Bxf3 19.Nxf3 Bxb2 20.Qxb2 Nb4 21.Rxc8 Rxc8 22.Nd4 g6 23.Qe2 h5 24.a3 Nc6 25.Nxc6 Rxc6 26.Qd3 Nc3 27.b4 a5 28.bxa5 Qc5 29.Ra1 Ra6 30.Bf3 Rxa5 31.Kg2 b5 32.h3 Ra4 33.g4 h4 34.Qd2 Qc4 35.Qb2 Qc5 36.Qb3 Ra6 37.Qb2 Ra4 38.Qb3 Ra6 39.Qb2 Ra4 ½-½ (39)Kramnik,V (2793)-Sadler,M (2646) London 2013] **11...Nxd4 12.exd4 Ba7** [the rest of the game is quite uneventful as Aronian was eager to end the

game due to illness.]

13.Bg5 Be6 14.Rc1 Rc8 15.Bxf6 Qxf6 16.Nxd5 Bxd5 17.Bxd5 Rxc1 18.Qxc1 b5 19.Qc6 Bxd4 20.Qxf6 Bxf6 21.b3 Rd8 22.Rd1 Kf8 23.Kf1 a5 24.Bf3 Rxd1+ 25.Bxd1 Ke7 26.a4 bxa4 27.bxa4 Bc3 28.Bb3 Bb4 29.Ke2 Kf8 30.Bc4

½-½



Diagram 2



GM M. VACHIER-LAGRAVE - GM PETER SVIDLER 1/2 - 1/2

By WGM Tatev Abrahamyan

After a rough start of losing the first two games and having the black pieces three times in the first four games, Peter Svidler seems to be recovering with his second draw in a row. The players followed one of the main lines of the Ruy Lopez, which resulted in a pawn structure that resembled the Sicilian Najdorf. The position was quite balanced throughout and the players decided not to get adventurous and agreed to a draw.

1.e4 e5 2.Nf3 Nc6 3.Bb5 a6 4.Ba4 Nf6 5.0-0 Be7 6.Re1 b5 7.Bb3 d6 8.c3 0-0 9.h3 Re8 10.d4 Bb7 11.Nbd2 Bf8 [The Zaitsev Variation of the Roy Lopez] 12.d5 Nb8 13.Nf1 Nbd7 14.N3h2 c6 [14...Nc5 15.Bc2 c6 16.b4 Ncd7 17.dxc6 Bxc6 is the main continuation] 15.dxc6 Bxc6 [Diagram 1 after this pawn exchange, the pawn structure looks more like a Sicilian Najdorf structure.]

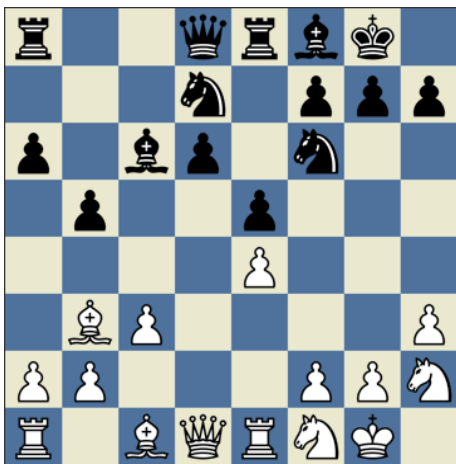


Diagram 1

16.Bg5 Qc7 17.Qf3 a5 18.Rad1N [18.Bxf6 has been played by Anish Giri's second, Van Kampen against Ding Liren 18...Nxf6 19.Ng4 Nxg4 20.hxg4 a4 21.Bc2 Re6 22.Rad1 a3 23.b4 Bd7 24.Rd3 Rf6 25.Qd1 and white won eventually] 18... Qb7 19.Ng3 a4 20.Bc2 [the bishop is not well placed here] [20.Bd5 Bxd5 21.exd5 it looks strange to exchange the bishops as it gets rid of the d6 weakness and the d5 weak square is occupied but white's knights now have squares and white has gained some space] 20...b4 21.Nf5 Re6 22.Bxf6 [The reason white trades his bishop for a knight is because black's f8 bishop is very bad and white would like to control the d5 square] 22...Nxf6 23.Ng4 Nxg4 24.hxg4 g6 25.Ne3 bxc3 26.bxc3 Bh6 [rerouting the bad bishop] 27.Rb1 Qa7 28.Rb4 Bg5 29.Qe2 Ree8 30.Qd3 Red8 31.Nd5 [the players have placed the pieces on their optimal squares and it's hard to make progress] 31...Rab8 32.Reb1 a3 33.Nb6 Kg7 34.g3 Rb7 35.Kg2

1/2-1/2



GM HIKARU NAKAMURA - VESELIN TOPALOV 1/2 - 1/2

By WGM Tatev Abrahamyan

Black played a novelty on move 9, sacrificing his queen for a rook and a minor piece. White played a few inaccurate moves and was behind in development with his king stuck in the center. Unfortunately, Veselin Topalov wasn't able to find the key critical move which would have given him the edge. White was unable to untangle and get his king to safety. After a lot of exchanges, white was left with his queen against a rook and a bishop, but with all the pawns on one side of the board, there was no way for the queen to show her superiority.

1.d4 Nf6 2.c4 e6 3.Nf3 d5 4.Nc3 Be7 5.Bf4 0-0 6.Qc2 c5 7.dxc5 Na6 8.Rd1 Nxc5 9.cxd5 Nxd5!?N [9...exd5 has been played several times, but this position is already not very common 10.e3 Qa5 11.Be2 Nce4 12.0-0 Nxc3 13.bxc3 Bd7 14.Qb2 has been played by the late Karen Asrian] 10.e4 Nxf4 11.Rxd8 Rxd8 [Diagram 1 the whole idea behind 9...Nxd5. Black has sacrificed his queen for a rook and a minor piece for long term compensation]



Diagram 1

12.Ne5 [stopping the Nd3 check] 12...Bf6 13.Nb5 [this move seems to only help black] 13...b6 14.b4 Bxe5 15.bxc5 a6 [15...Bd7 less natural as it doesn't really attack the knight 16.g3 Ng2+ 17.Bxg2 Bxb5 18.Bf1 Be8 19.Ba6 bxc5] 16.Nd6 [16.g3 axb5 17.gxf4 Bxf4 18.Bxb5 getting rid of that annoying knight and now white can castle] 16...bxc5? [16...Bd4! Diagram 2 missed opportunity by black. The point is to keep the c file open for the rook. It's very hard to white to develop his pieces. The knight on d6 doesn't really want to take the c8 bishop 17.Nxc8 Raxc8 18.c6 Bc5 helps black as the rook also joins the game]

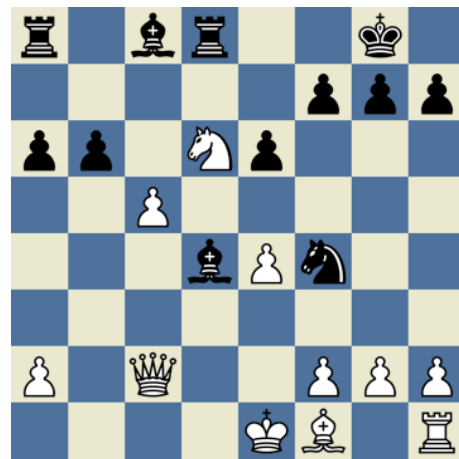
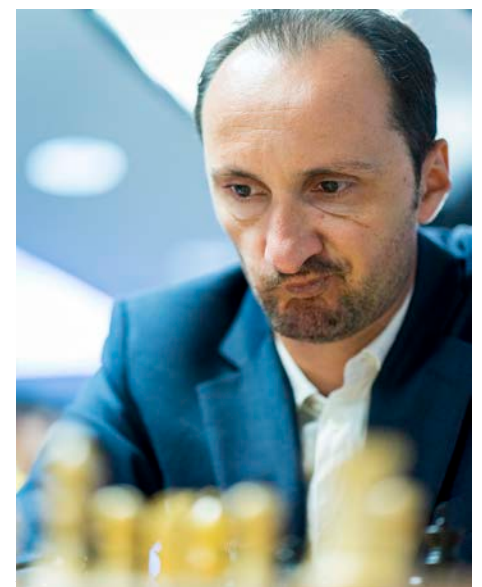


Diagram 2

17.Nc4 Bd4 18.g3 Ng6 19.Be2 Bd7 20.0-0 Bb5 21.Na5 Ne5 22.Rd1 Rab8 23.Kg2 Bxe2 24.Qxe2 Rb5 25.Nb3 h6 26.Rd2 [26.Qc2 Nakamura felt that this was his missed opportunity and it's not clear what black's next move is 26...Nc6 is not good because 27.a4 and the c5 pawn hangs] 26...Nc6 27.Qc4 e5 28.a4 Rb4 29.Qxa6 Rxb3 30.Qxc6 Ra3 31.Qa6 Rb8 32.a5 c4 33.Qxc4 Rxa5 [with all the trades and pawns on one side of the board, White cannot make progress] 34.Kh3 Rc5 35.Qe2 Rcb5 36.f4 Rb4 37.Qd1 Rb1 38.Qh5 R1b5 39.Qe2 Rb4 40.Qd1 Rb1 41.Qh5 R1b5 42.Qd1

1/2-1/2



GM DING LIREN - VISWANATHAN ANAND 1/2 - 1/2

By WGM Tatev Abrahamyan

was playing against Vishy Anand's isolated queen's pawn. Both sides spent some time improving their pieces, with white putting pressure on the d5 pawn and black defending the pawn. At some point, white went for simplifications, exchanging the minor pieces and keeping the major pieces on the board, which favored the side playing against the isolated pawn. Anand found a clever way to exchange the pieces and gave white a weakness, which resulted in a drawn end-game.

1.c4 c5 2.Nf3 Nc6 3.Nc3 Nf6 4.g3 d5 5.cxd5 Nxd5 6.Bg2 e6 7.0-0 Be7 8.d4 0-0 9.Nxd5 exd5 10.dxc5 Bxc5 11.Bg5 Qd7 [funny looking move, blocking the bishop on c8 but black can chase the g5 bishop with h6 in the future and play Qe7 later, regaining the tempo] 12.Rc1 Bb6 13.Bd2 Qe7 14.Bc3 [Diagram 1 we reach a classical isolated queen's pawn position. White has a long term slight edge against pawn but black's pieces will be quite active so making progress is not easy] 14... Rd8 15.e3 Bf5 16.Re1 Be4 17.Re2

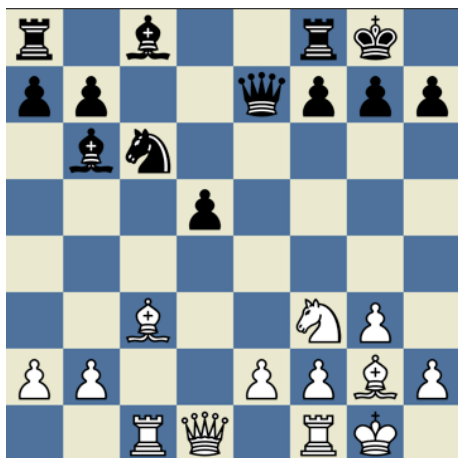


Diagram 1

Rd7 18.Rd2 Rad8 19.Qe2 Rd6 20.Rcd1 h6 21.h4 Qe6 [the players placed their pieces on their best squares so now it's time for white to start looking for ways to make progress] 22.Nd4 [allows simplifications] [22.a3 waiting move and allowing white to play b4 which was impossible during the game] 22...Nxd4 23.Bxd4 Ba5! [Diagram 2 Clever! The bishops will be traded off, but white will be left with a c3 weakness] [23...Bxd4 24.Rxd4 Bxg2 25.Kxg2

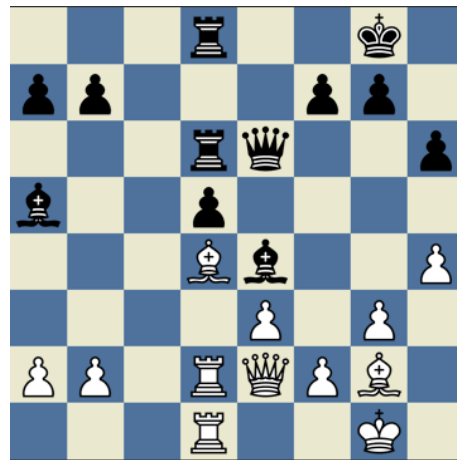


Diagram 2

in an isolated pawn position, trading off the minor pieces will favor the side playing against the isolated pawn] 24.Bc3 Bxc3 25.bxc3 Bxg2 26.Kxg2 Rc8 [the position is very drawn now] 27.Qf3 Rxc3 28.Rxd5 Rxd5 29.Rxd5 Rc8 30.Ra5 Qb6 31.Re5 Kf8 32.Qf5 Re8 33.Rxe8+ Kxe8 34.Qe5+ Kf8 35.Qb8+ Ke7 36.Qe5+ Kf8

1/2-1/2



GM WESLEY SO - ANISH GIRI 1/2 - 1/2

By WGM Tatev Abrahamyan

Anish Giri's Catalan preparation was better than Wesley So's and the position transformed into a stonewall structure, which favored black. Wesley wasted too much time trying to trade off the dark squared bishops and suddenly found himself under a lot of pressure on the queen side. Giri missed the opportunity to put his opponent under even more pressure, allowing his opponent to trade off most of the pieces. The resulting knight endgame was unpleasant for white, but he did not have a lot of trouble defending it.

1.Nf3 d5 2.d4 Nf6 3.c4 e6 4.g3 Bb4+ 5.Bd2 Be7 6.Bg2 0-0 7.0-0 c6 8.Qc2 Nbd7 9.Rd1 b6 10.b3 a5 11.Bc3 Ne4 [11...Bb7 12.Nbd2 c5 13.Ne5 cxd4 14.Bxd4 Nxe5 15.Bxe5] 12.Bb2 f5N [Diagram 1 stonewall structure] [12...Bb7 less committal and develops the last piece]



Diagram 1

13.e3 [13.cxd5 cxd5 14.Qc6 looks natural as it wins a pawn with a double attack 14...Bb7 15.Qxe6+ (15.Qxb7 Nd6 16.Qc6 Rc8 17.Qa4 b5 18.Qa3 Nc4 19.bxc4 Bxa3 20.Nxa3 b4 is a crazy and forced computer line leaving white with 3 pieces for the queen, but in this instance black will win another pawn and the minor pieces aren't that well coordinated) 15...Kh8 and the queen will be trapped on the next move with Rf6] 13...Ba6 14.Ba3 [trading the bad bishop] 14...Bxa3 15.Nxa3 b5 16.Rac1 Qe7 17.cxb5 cxb5 18.Nb1 b4 19.Qb2 Rfc8 [black's position is pleasant as he has a space advantage] [19...a4 Diagram 2 putting more pressure on white's queen side and threatening to push a3 for example if we pass the move to black with 20.h3 (20.bxa4 Nb6 and the knight will have a nice square on c4) 20...a3 and the queen has nowhere to go but a1]



Diagram 2

20.Ne1 h5 21.Rxc8+ Rxc8 22.Rc1 Qd8 23.Bf1 Bxf1 24.Kxf1 [the exchanges help white as black has more space] 24...h4 25.Rxc8 Qxc8 26.Qc2 Qxc2 27.Nxc2 hxg3 28.hxg3 g5 29.Ke2 Kf7 30.a3 bxa3 31.Nbxa3 Nc3+ 32.Kd2 Ne4+ 33.Ke2 Ndf6 34.b4?! [white can just wait without committing with his pawns] [34. Nb5] 34...a4 35.Ne1 Ke7 36.Nd3 Nd7 37.Kd1 Nb6 [this endgame is pretty tricky as both of black's knights are better than white's] 38.Kc2 Nc4 [38...g4 39.Nb5 Nc4 40.Nc3 a3 41.Na2 (41.Nxe4?? a2) 41...Kd6 still looks drawish] 39.Nxc4 dxc4 40.Nb2 Nxf2 41.Nxa4 Ne4 42.Nb6 c3 43.Na4 Nxc3 44.Kxc3 f4 [and all the pawns will be traded off]

½-½



DAILY PUZZLE

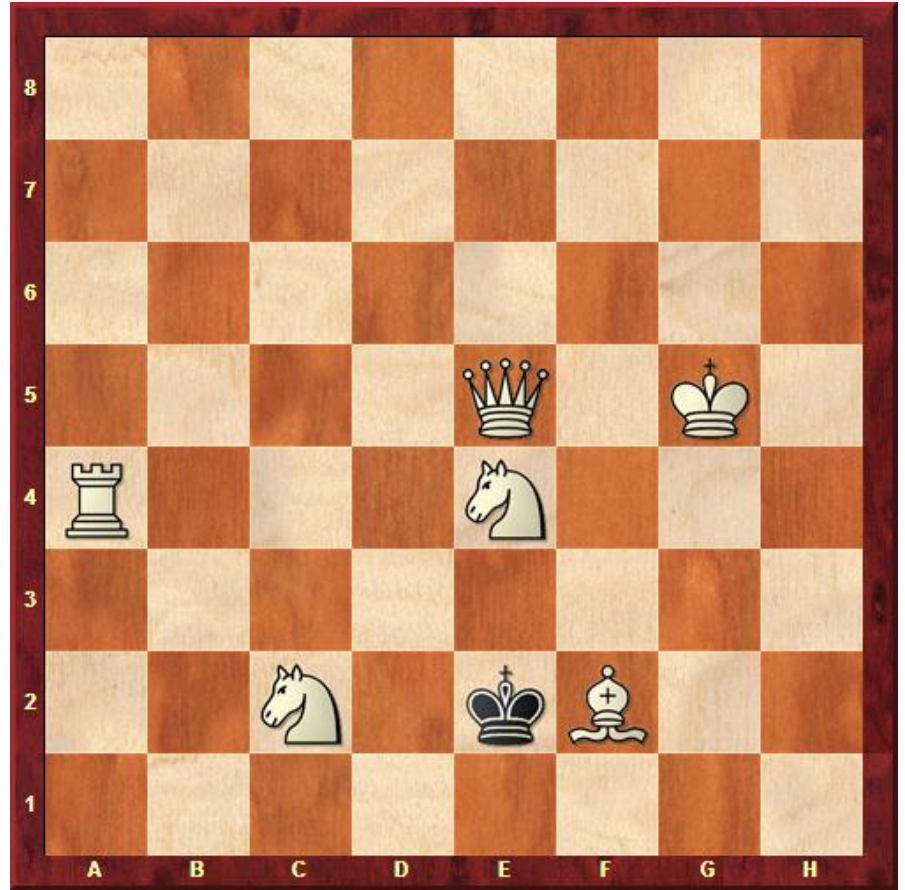
By FIDE Master Aviv Friedman

Each day, the Club provides a daily puzzle for all visitors to solve. Two \$25 gift cards to our store will be drawn daily among those who submit a correct solution.

Objective: White to move.
Checkmate in two.

Yesterday's winner: Rick Weisenstein and Kishan Clark

Solution: 1. Rh5



CROSSTABLE AFTER ROUND FOUR

Rank	Player	1	2	3	4	5	6	7	8	9	10	R	P
1	GM Aronian, Levon (2792)	X	½	-	-	-	½	½	-	-	1	4	2½
2	GM So, Wesley (2771)	½	X	-	-	1	-	½	-	½	-	4	2½
3	GM Anand, Viswanathan (2770)	-	-	X	-	½	½	½	1	-	-	4	2½
4	GM Topalov, Veselin (2761)	-	-	-	X	½	½	-	½	-	1	4	2½
5	GM Nakamura, Hikaru (2791)	-	0	½	½	X	-	-	-	1	-	4	2
6	GM Caruana, Fabiano (2807)	½	-	½	½	-	X	-	-	-	½	4	2
7	GM Ding, Liren (2755)	½	½	½	-	-	-	X	-	½	-	4	2
8	GM Vachier-Lagrave, Maxime (2819)	-	-	0	½	-	-	-	X	½	½	4	1½
9	GM Giri, Anish (2769)	-	½	-	-	0	-	½	½	X	-	4	1½
10	GM Svidler, Peter (2751)	0	-	-	0	-	½	-	½	-	X	4	1



SCHEDULE OF EVENTS

THURSDAY, AUGUST 4
4:00 PM - 5:30 PM
Autographs, Kingside Diner

THURSDAY, AUGUST 4
6:00 PM | Opening Ceremony*

FRIDAY, AUGUST 5
1:00 PM | Round 1

SATURDAY, AUGUST 6
1:00 PM | Round 2

SUNDAY, AUGUST 7
1:00 PM | Round 3

MONDAY, AUGUST 8
1:00 PM | Round 4

TUESDAY, AUGUST 9
1:00 PM | Round 5

WEDNESDAY, AUGUST 10
Rest Day

THURSDAY, AUGUST 11
1:00 PM | Round 6

FRIDAY, AUGUST 12
1:00 PM | Round 7

SATURDAY, AUGUST 13
1:00 PM | Round 8

SUNDAY, AUGUST 14
1:00 PM | Round 9

MONDAY, AUGUST 15
12:00 PM | Playoff

MONDAY, AUGUST 15
6:00 PM | Closing Ceremony*

TUESDAY, AUGUST 16
1:00 PM | Ultimate Moves

*Private Event,
World Chess Hall of Fame

PAIRINGS - ROUND 5

- GM Anish Giri
- GM Levon Aronian
- GM Viswanathan Anand
- GM Wesley So
- GM Veselin Topalov
- GM Ding Liren
- GM Peter Svidler
- GM Hikaru Nakamura
- GM Fabiano Caruana
- GM M.Vachier-Lagrave

SINQUEFIELD CUP SIDE EVENTS

- LECTURES**
August 9
- AUGUST KNIGHTS R2**
August 10
- LECTURES**
August 11

Cup Chronicle Photo Credit: Austin Fuller | Lennart Ootes | Spectrum Studios



4657 MARYLAND AVENUE | SAINT LOUIS, MO 63108
314.361.CHESS (2437) | USCHESSCHAMPS.COM