

INSIDE THIS ISSUE

Anand - Nepomniachtchi	2
Nakamura - Aronian	3
Vachier-Lagrave - Karjakin	4
So - Caruana	5
Svidler - Carlsen	6
Current Standings	7
Round 6 Pairings	7
Schedule of Events	8

CUP★CHRONICLE

THURSDAY, AUGUST 10, 2017 | ISSUE 7

ROUND 7 HIGHLIGHTS

BY WGM TATEV ABRAHAMYAN



GM LEVON ARONIAN & GM MAURICE ASHLEY INTERVIEW // LENNART OOTES

ROUND 7 RESULTS

♔ GM V. Anand	1
♚ GM I. Nepomniachtchi	0
♔ GM H. Nakamura	0
♚ GM L. Aronian	1
♔ GM M. Vachier-Lagrave	1/2
♚ GM S. Karjakin	1/2
♔ GM W. So	1/2
♚ GM F. Caruana	1/2
♔ GM P. Svidler	1/2
♚ GM M. Carlsen	1/2

CURRENT STANDINGS

1. GM M. Vachier-Lagrave	4 1/2
2. GM V. Anand	4 1/2
3. GM L. Aronian	4 1/2
4. GM M. Carlsen	4
5. GM F. Caruana	3 1/2
6. GM S. Karjakin	3 1/2
7. GM P. Svidler	3
8. GM I. Nepomniachtchi	2 1/2
9. GM H. Nakamura	2 1/2
10. GM W. So	2 1/2

As we inch closer and closer to the grand finale, the competition for first place is getting close. As Maxime Vachier-Lagrave's preparation failed to bring him home the full point, he was joined by Levon Aronian and Viswanathan Anand, both of whom won their games. The three are leading the tournament with 4.5/7 and are being chased by Magnus Carlsen who is only half a point behind. The tournament still remains wide open as several of the leaders will meet in the following two rounds. The players have once again proved that they came here to play and are not shying away from taking risks. The next two days promise to bring even more excitement!



GRAND CHESS TOUR™
2017
GRANDCHESSTOUR.ORG | @CCCSL
@GRANDCHESSTOUR | #GRANDCHESSTOUR

CHESS CLUB
AND SCHOLASTIC CENTER
of Saint Louis

GM VISWANATHAN ANAND - GM IAN NEPOMNIACHTCHI

BY WGM TATEV ABRAHAMYAN



GM ANAND VS. GM NEPOMNIACHTCHI
// LENNART OOTES

The former World Champion scored his second victory of the tournament after his opponent completely collapsed. The game was a theoretical Najdorf where Anand once again chose a line that he has championed. His opponent was well prepared and the game was balanced throughout until Nepomniachtchi decided to give up a pawn for active counterplay in the rook endgame instead of playing defensively. Unfortunately for him, the counterplay did not offer enough and he soon found himself in a lost position with less material.

1.e4 c5 2.Nf3 d6 3.d4 cxd4 4.Nxd4 Nf6 5.Nc3 a6 6.h3 e5 7.Nde2 h5 8.Bg5 Be6 9.Bxf6 Qxf6 10.Nd5 Qd8 11.Qd3 Nd7 12.0-0-0 g6 [this move was tried by Nepomniachtchi earlier this year 12... b5 13.Kb1 Rb8 14.a3 Bxd5 15.Qxd5 Be7 16.Nc3 0-0 17.Qd2 Nf6 18.g4 b4 19.axb4 Rxb4 20.f3 Qb6 21.b3 Rb8 22.Rh2 Rd4 23.Qe1 d5 24.Rxd4 exd4 25.Na4 Qc7 26.e5 Bb4 27.Qe2 Re8 28.Qxa6 Rxe5 29.Re2 Re3 30.Rxe3 dxe3 31.g5 Nd7 32.Qa8+ Nf8 33.Qxd5 Qe7 34.Qe4 Qxe4 35.fxe4 Ne6 36.c3 1/2-1/2 (36) Anand,V (2786)-Nepomniachtchi,I (2751) Zürich 2017]

13.Kb1 Nc5 [13...Rc8 was tried by Vachier-Lagrave in Leuven in June 14.Nec3 Bh6 15.h4 Nc5 16.Qe2 Bd7 17.f3 Ne6 18.Qf2 Rc5 19.g4 hxg4 20.fxg4 Bg5 21.Bb5!]

Anand played brilliantly but unfortunately went on to lose: 0-1 (80) Anand,V (2775)-Vachier Lagrave,M (2783) Leuven 2017]

14.Qf3 Bg7 15.Nec3 b5 16.Ne3 0-0 17.Rg1 [Novelty]

[17.g4 h4 18.Rg1 Qg5 19.Rxd6 Rfd8 20.Rc6 Rac8 21.Rxc8 Bxc8 22.Bg2 Rd4 23.Rd1 Bb7 24.Ncd5 Rxe4 25.c3 Bxd5 26.Nxd5 a5 27.a3 Qd8 28.b4 axb4 29.axb4 Rc4 30.Ne3 Qc7 31.Qc6 Ne4 32.Qa8+ Kh7 33.Bxe4 Rxc3 34.Kb2 Rc4 35.Nxc4 Qxc4 36.Qd5 Qxb4+ 37.Kc2 Qa3 38.f3 1-0 (38) Eljanov,P (2757)-Oparin,G (2621) Novi Sad 2016]

17...Bh6 18.Ncd5 Bxe3 [this bishop isn't doing much and Black is exchanging it for a knight to be able to fight over the d5 square]

19.Qxe3 Rc8 20.Be2 Kg7 21.f4 [now that the dark square bishop is gone, White wants to put pressure on the center]

[21.g4 looks like the more traditional way of attacking but doesn't really do much 21...h4 22.g5 Bxd5 23.exd5 (23.Rxd5 is the preferred way of recapturing but 23...Ne6 is quite annoying as both the d4 and f4 squares are available for the knight) 23...Qe7 and Black can always defend the pawn with Rh8]



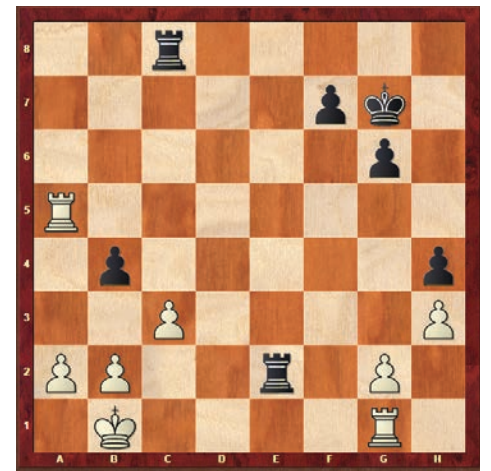
21...Bxd5 22.Rxd5 exf4 23.Qxf4 Re8 [Black gives up a pawn but will win back on e4]

24.Rxd6 Qe7 25.e5 [giving back the pawn to make sure the e2 bishop opens up]

25...Qxe5 26.Qxe5+ Rxe5 27.Bf3 Ne4?! [unnecessary]

[27...a5 simply moving the pawn away from danger and keeping the balance]

28.Bxe4 Rxe4 29.Rxa6 Re2 [this was the point of the sacrifice. Black wants to keep his rook active as the g1 rook is now stuck]



30.c3 h4 31.Ra5 [the point is to draw the rook away from 5th rank]

31...b4? [31...Rb8 32.Ra3 Rd8 33.Rb3 Rd5 34.Rb4 g5 and Black's pawn are quite fast as White still doesn't have a passed pawn. The extra pawn isn't as relevant here due to that; 31...Rc5 32.a4]

32.cxb4 Rcc2 33.b3 Rb2+ 34.Ka1 [there is no perpetual]

34...Rxc2 35.Rxc2 Rxc2 36.b5 [now White's pawns are simply too fast and the king will stop Black's f pawn]

36...Re2 [36...Rg4 is a cute attempt 37.Ra4 refutes it (of course not 37.hxc4? h3 and the pawn is unstoppable)]

37.b6 Re8 38.b7 Rb8 39.Rb5 f5 40.Kb2

1-0

GM HIKARU NAKAMURA - GM LEVON ARONIAN

BY WGM TATEV ABRAHAMYAN, ANNOTATIONS BY GM CRISTIAN CHIRILA

Levon Aronian chose a complicated and double-edged line in the English Opening. His opening choice indicated that even with the Black pieces he was ready to fight and wanted that full point. Aronian was able to handle the complications of the position better and always had the upper hand. In an already-difficult position, matters became even worse for Nakamura after he missed a tactical shot which was spotted by his opponent immediately. In a bishop against knight endgame, where Aronian had the bishop and the extra pawn, the four-time U.S. champion was forced to resign. He now finds himself at the bottom of the standings along with Ian Nepomniachtchi and Wesley So.

[The most spectacular game of the round was by far the already famed battle between Nakamura and Aronian, two players that have tested each other's will throughout the years and have managed to build quite a rivalry due to their dynamic and contrarian (at times) styles. Let's see how this year's Sinquefeld rematch went!]

1.c4 Nf6 2.Nc3 e5 3.Nf3 Nc6 4.g3 Bb4 [4...d5 Leads to the reversed-Dragon type of structures, which are theoretically abundant and rich in their nuances]

5.Bg2 0-0 6.0-0 e4 7.Ng5 [7.Ne1 Bxc3 8.bxc3 Re8 9.f3 d5 10.cxd5 Nxd5÷ Might have been Aronian's improvement over his game vs Nepomniachtchi from Leuven (10...Qxd5 11.fxe4 Nxe4 12.Qb3 Qh5 13.Nd3² 1-0 (51) Nepomniachtchi,I (2766)-Aronian,L (2780) Leuven 2017)]

7...Bxc3 8.bxc3 Re8 9.f3 [White needs to open the center in order to take advantage of his bishop pair]

9...e3 10.d3 [10.dxc3?! d6 11.Rb1 b6°]

10...d5 11.Qa4 h6 12.cxd5 Nxd5 13.Ne4 f5 14.Nc5 f4 15.Ne4N [15.Bb2 Rb8 16.c4 Nde7 17.g4 b6 18.Ne4 Be6÷ 1/2-1/2 (44)]

15...Rb8 16.Qa3 Re6 17.c4?! [17.Bb2 Would have been better, due to the preserved flexibility in the pawn structure,

as well as the ongoing control over the d4 square. The game continuation is quite reckless 17...Rg6 18.c4 Nde7 19.g4 Black's Ns are completely restrained 19...h5 20.Kh1 A very nice prophylactic move 20...hxg4 21.fxg4 Bxg4 22.Rxf4±]



17...Nde7 18.Bb2 Nf5 [Now Black's Ns are extremely potent and will continue to be a real treat for the White monarch in the future]

19.d4 [Quite the desperado, trying to open the "d" file and take somewhat of a control over the crucial d4 square]

[19.gxf4 Ncd4 20.Rae1 Ra6 21.Qc3 (21.Qc5 b6 22.Qe5 Ra5 23.c5 Rxa2,) 21...Qh4]

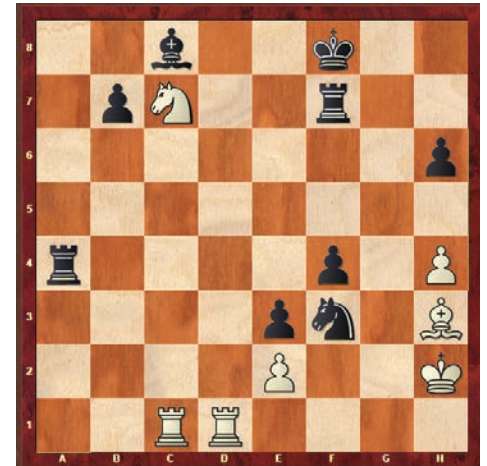
19...Ncxd4 20.Bxd4 Nxd4 21.Qxa7 Nc6 [The safer and objectively best continuation]

[21...Nxe2+ 22.Kh1 Bd7 23.Rfe1 Ra8 24.Qc5 Rxe4 25.fxe4 Bg4 26.gxf4 Qd2÷ Would have led to a very sharp, materially imbalanced position]

22.Qa3 Qf8 23.Qxf8+ Kxf8 24.Rfd1 [24.gxf4 Nd4 25.Ng3 c5 The centralized N will be a force for the rest of the game. Black is better]

24...g5 25.Nc3 Re7 26.Nd5 Rf7 27.h4 Ra8 28.a4 Na5 29.gxf4 gxf4 30.Kh2 Nxc4 31.Rac1 Nd2 32.Nxc7 Rxa4 33.Bh3? [The final mistake, committed in an already very unpleasant position]

[33.Rc2 Bf5 34.Rc3 (34.Rc5 Ra2 35.Nd5 Nb3 36.Rc3 Rd2-+) 34...Ra2μ; 33.Rc5 Rf5-+]



33...Nxf3+ 34.exf3 Ra2+ 35.Bg2 Rg7 36.Rg1 Rg3 37.Kh1 Bh3 38.Bf1 e2 39.Bxe2 Rxe2 40.Nd5 Rxf3 [40...Bg2+ 41.Rxg2 Rxxg2 42.Rc8+ Kf7 43.Rc7+ Ke8 44.Re7+ Kd8 45.Rxb7 Rd2 46.Nxf4 Rxf3 47.Ne6+ Kc8 48.Rc7+ Kb8 49.Rc1 Rh3+ 50.Kg1 Rxxh4-+]

41.Rg6 Re6 42.Rcg1 Rxxg6 43.Rxxg6 Bd7 44.Kg2 Rg3+! [A very precise transition into a technically won endgame. White will find it impossible to spread his resources on both sides of the board, leading to an easy conversion by black!]

45.Rxxg3 fxxg3 46.Kxxg3 Kf7 47.Kf4 Ke6 48.Nb4 Be8 49.Nd3 Kd5 50.Nf2 Bd7 51.Ke3 Ke5 52.Ne4 Bc6 53.Ng3 Bd5 54.Kd3 Kf4 [Aronian scores his second win in a row and is now the 2nd best player in the world, as well as one of the co-leaders of the tournament going into the final two rounds. It will be a fierce battle for the Cup until the end!]

0-1

GM MAXIME VACHIER-LAGRAVE - GM SERGEY KARJAKIN

BY WGM TATEV ABRAHAMYAN



GM SERGEY KARJAKIN
// LENNART OOTES

This was definitely the wildest affair of the round! Karjakin played a novelty that Vachier-Lagrave was well aware of and prepared against. Karjakin later admitted that he reviewed the line an hour before the game but had a hard time remembering any of it. The resulting position was such that gave Black many opportunities to make a mistake and lose the game in truly phenomenal fashion. The Russian Grandmaster was able to figure out the ins and outs of the position over the board and save the half-point. Later in a tweet, Karjakin posted that he had everything until move 38 in his notes but had to spend all his time trying to remember it.

1.e4 e5 2.Nf3 Nc6 3.Bb5 Nf6 4.0-0 Nxe4 [For the first time in this tournament, we see the Berlin wall make an appearance!]

5.d4 Nd6 6.Bxc6 dxc6 7.dxe5 Nf5 8.Qxd8+ Kxd8 [This position is a common occurrence at the top levels. Lately, most players have been playing the Italian instead of the Spanish but the Berlin wall is still one of the biggest opening trends]

9.h3 Ke8 10.Nc3 h5 11.Bf4 Be7 12.Rad1 Be6 13.Ng5 [one of the advantages Black has in this position is his bishop pair, so White would really like to eliminate one of them. The problems for Black are the doubled c pawn and the king. For White the problem is the pawn on e5, which makes Black's light squared bishop a monster]

13...Rh6 14.Rfe1 Bb4 15.g4 [White has a pawn majority on the kingside, so that's where he will play]

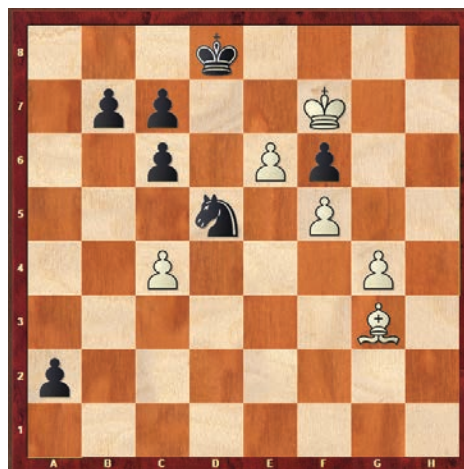
15...hxc4 16.hxc4 Ne7 17.Nxe6 Rxe6 18.Kg2 Bxc3 19.bxc3 Rd8 20.Rxd8+ Kxd8 21.Rh1 Nd5 22.Bg3 Rh6 [Novelty that forces the position. Both players knew the crazy variations that ensued]

[22...g5 23.c4 Nc3 24.Kf3 Rg6 25.a3 Na4 26.Ke4 Nc5+ 27.Kf5 Ne6 28.Rh8+ Kd7 29.c3 Ng7+ 30.Ke4 Ne6 31.f3 c5 32.Bf2 a6 33.Be3 b6 1/2-1/2 (33) Anand,V (2770)-Karjakin,S (2766) Khanty Mansiysk 2014 CBM 160 [ChessBase Website]]

23.Rxh6 gxh6 [this position is very critical. White is basically giving up the queenside while marching his king over to the kingside, capturing the h pawn and trying to queen the e pawn]

24.Kh3 Nxc3 25.Kh4 Nxa2 26.Kh5 Nc3 27.Kxh6 a5 28.f4 a4 [It looks like the a pawn is running but the fact that the king is on d8 gives white a tempo as the e pawn will move to e7 with a check]

29.f5 Ke8! [only move. There is a lot of move for Black to err]

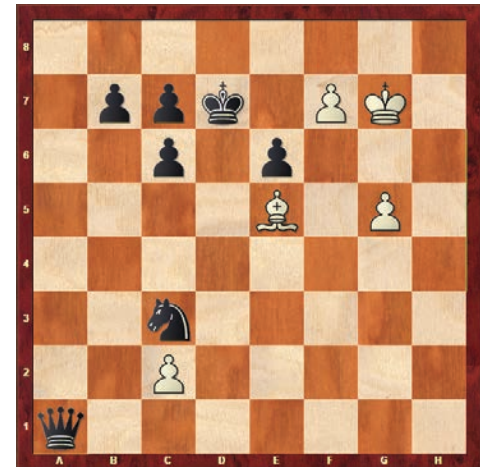


Analysis Diagram

[29...a3?? 30.e6 f6 (30...fxe6 31.f6 a2 32.f7 a1Q 33.f8Q+ Kd7 34.Qf7+ Kd8 35.Bh4+ Kc8 36.Qe8#) 31.Kg7 a2 32.Kf7 Nd5 33.c4!! at first, the computer evaluates this position as a draw but a few moves later...

33...a1Q 34.cxd5 Qa3 (34...Qa8 35.Bh4 Kc8 36.Bxf6 cxd5 37.g5) 35.d6 and now White is completely winning 35...Qe3 (35...Qxg3 36.e7+ Kd7 37.e8Q+ Kxd6 38.Kxf6 and the pawns are unstoppable) 36.d7 c5 37.Bh4 the bishop dominates the queen 37...Qe5 38.Bxf6+ Qxf6+ 39.Kxf6 c4 40.Ke5 c3 41.f6 c2 42.f7 Ke7 43.d8Q+ Kxd8 44.f8Q#]

30.g5 a3 31.e6 a2 32.Kg7 fxe6 33.f6 a1Q 34.f7+ Kd7 35.Be5! [35.f8Q Ne4+ wins for Black]



35...Qa5 36.Bf6 [funny enough, the queen cannot stop the pawn]

36...Qc5 37.f8Q Qxf8+ 38.Kxf8 Ne4 [the knight needs to sacrifice itself for the pawn, otherwise the g pawn is too fast]

39.Kf7 Nxc5+ 40.Bxc5 Kd6 [there aren't enough pawns left for White to utilize the extra bishop. Black can easily get the c2 pawn]

41.Kf6 e5 42.Kf5 Kd5 43.Bd8 Kd4 44.Bxc7 Kc3 45.Kxe5 Kxc2

1/2-1/2

GM WESLEY SO - GM FABIANO CARUANA

BY WGM TATEV ABRAHAMYAN



GM WESLEY SO VS. GM FABIANO CARUANA // LENNART OOTES

The U.S. Champion has had a very tough tournament so far after losing two games back to back. In the postgame interview, he admitted that the losses are taking their toll on him and the past few days have been very difficult for him psychologically. He tried to remember the rest of the tournament and treated this game as the first round of a new event. The game was quite solid and uneventful as neither side tried to press for a win. Of course, it is usually White's choice to dictate the course of the game and Wesley So simply wanted to recover with a draw, which he achieved without any trouble. Caruana is quite a bit behind the leaders but felt that today was not the round to go all out.

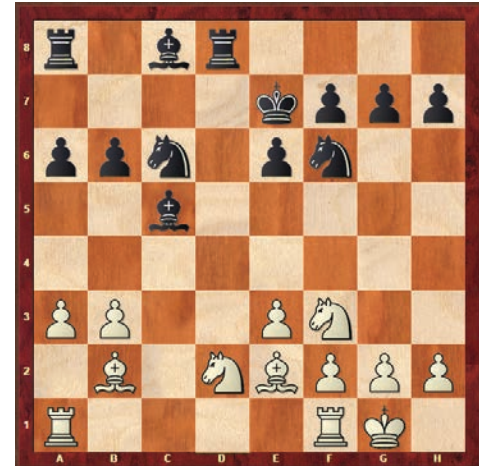
1.d4 d5 2.Nf3 Nf6 3.c4 dxc4 4.e3 e6 5.Bxc4 c5 6.0-0 a6 7.dxc5 Bxc5 [Also possible is 7...Qxd1 8.Rxd1 Bxc5 9.Nbd2 0-0 10.Be2 Rd8 11.Ne5 Be7 12.b3 Nd5 13.Bb2 f6 14.Nd3 Nc6 15.e4 Nb6 16.e5 f5 17.Rac1 Bd7 18.Nf3 1/2-1/2 (18) Kramnik,V (2802)-Kasparov,G (2838) Moscow 2001 CBM 087 [Huzman]]

8.Qxd8+ Kxd8 9.Be2 Ke7 10.Nbd2 [The two have played this position before when So tried 10.Ne5 Nbd7 11.Nd3 Bd6 12.Nd2 b5 13.Nb3 Bb7 14.Na5 Bd5 15.Bd2 Rhc8 16.Rfc1 Ne5 17.Nb4 Nc4

18.Nxc4 bxc4 19.Nxd5+ exd5 20.Bc3 Rab8 21.Rc2 Bb4 22.Be5 Bd6 23.Bd4 Bc5 24.Bxf6+ Kxf6 25.Rd1 Rd8 26.Rcd2 Be7 27.Bf3 d4 28.exd4 Rb4 29.Rc2 Rdb8 30.Rdd2 Kg6 31.a3 R4b6 32.g3 Bg5 33.Re2 Bf6 34.Be4+ Kh6 35.Red2 Re8 36.Bd5 Rxb2 37.Bxf7 c3 38.Rxb2 Rd8 39.Rdc2 cxb2 40.Rxb2 Bxd4 41.Rb4 g6 42.Ra4 Rd6 43.Kf1 Bb2 44.Ra5 Rc6 45.a4 Kg7 46.Bd5 Rc1+ 47.Kg2 Rc2 48.Be4 Rd2 49.Rxa6 Bd4 50.Rd6 Rxf2+ 51.Kh3 Be3 52.a5 Ra2 53.a6 Bg1 54.Kg4 Ra3 55.Rd1 Bc5 56.Rd7+ Kf6 57.Bd3 Bg1 58.h3 Ke6 59.Bb5 h5+ 60.Kf4 h4 61.gxh4 Rxa6 62.Rg7 Kf6 63.Rxg6+ Kxg6 64.h5+ Kxh5 65.Be2+ Kh4 66.Bxa6 Kxh3 1/2-1/2 (66) So,W (2812)-Caruana,F (2808) Stavanger 2017]

10...Nc6 11.b3 Rd8 12.Bb2 b6 13.a3 [Novelty. White has a slight edge in development but he did not press]

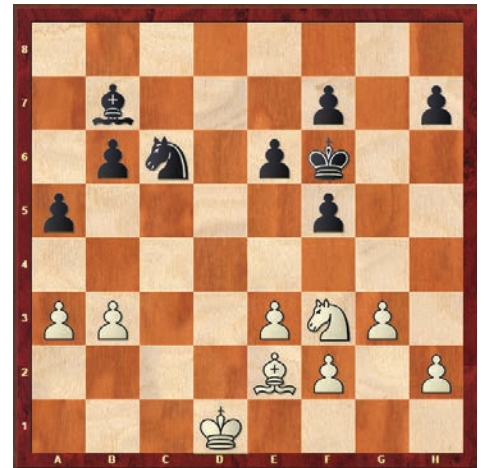
[13.Rfd1 Bb7 14.Ne1 Kf8 15.Nd3 Be7 16.Rac1 Nd5 17.Bf3 Na5 18.Nc4 Rab8 19.Be5 Rbc8 20.Bd4 Nxc4 21.bxc4 Ba3 22.Bb2 Bxb2 23.Nxb2 Nf4 24.Bxb7 Ne2+ 25.Kf1 Nxc1 26.Bxc8 Rxd1+ 27.Nxd1 a5 28.Nc3 Ke7 29.c5 bxc5 30.Ba6 Kd6 31.Bc4 1-0 (31) Gajewski,G (2644)-Duda,J (2468) Warsaw 2012]



13...a5 14.Rfc1 Bb7 15.Bxf6+ [White is not hiding his intention to draw this game]

[15.Rc2 keeps the game going]

15...gxf6 16.Ne4 Bd6 17.Nxd6 Rxd6 18.Kf1 Rad8 19.g3 f5 20.Ke1 Kf6 21.Rd1 Rxd1+ 22.Rxd1 Rxd1+ 23.Kxd1 [now too many pieces have come off to keep this game going for longer than the required 30 moves]



23...Ne5 24.Nxe5 Kxe5 25.Kd2 Kd6 26.Kc3 Bc6 27.b4 axb4+ 28.Kxb4 h6 29.Bb5 Bf3 30.Be8 Ke7 31.Ba4 Kd6 32.Be8 Ke7 33.Ba4

1/2-1/2

GM PETER SVIDLER - GM MAGNUS CARLSEN

BY WGM TATEV ABRAHAMYAN, ANNOTATIONS BY GM CRISTIAN CHIRILA



GM PETER SVIDLER
// LENNART OOTES

It was the second time in this tournament that Magnus Carlsen faced the Scotch Opening, but this time with a different result. Once again, the World Champion had the upper hand but was unable to convert the extra pawn in the endgame. Unlike yesterday, the defense by his opponent was a lot more straight-forward and Carlsen did not try very hard to win, as he knew it wouldn't be fruitful. In the postgame interview, he was asked how he overcame yesterday's disappointment. He felt very remorseful about overlooking the critical point in the game but still remains optimistic about his chances.

[In what was one of the most important match-ups of the round, Svidler decided to avoid the conventional openings paths and go for the risky Scotch. The imbalanced resulting position was a two way street in which both players tried to exert strategic pressure over the other. In the end, Carlsen's pressure wasn't enough to create any real dangers and the two agreed to a draw. Let's see how all this happened!]

1.e4 e5 2.Nf3 Nc6 3.d4 exd4 4.Nxd4 Nf6
[The most topical continuation]

[4...Bb4+ Was previously essayed by Magnus in his game against Wesley So in the earlier rounds. In that game he was worse out of the opening but managed to outplay his opponent in the middlegame to claim the victory. 5.c3 Be7 6.Nxc6 bxc6 7.Bd3 d6 8.0-0 Nf6 9.Re1 0-0 10.Nd2? So vs Carlsen, R5 Sinquefeld Cup 0-1]

5.Nxc6 bxc6 6.e5 Qe7 7.Qe2 Nd5 8.c4 Ba6 [8...Nb6 Is another main line]

9.b3 g6 10.f4 [10.g3 Bg7 11.Bb2 0-0 12.Bg2 Rae8 (12...Rfe8 13.0-0 Bxe5 14.Qxe5 Qxe5 15.Bxe5 Rxe5 16.cxd5 Bxf1 17.Kxf1 cxd5 18.Na3 c6 19.Nc2 a5 20.Rd1 Kf8 21.Rd4 Ke7 22.Rf4 Rf5 23.Ra4 Kd6 24.Ke2 Re8+ 25.Kf1 Ra8 26.Ne3 Re5 27.Ke2 Kc7 28.Kd2 Kb6 29.Bf1 Re4 30.Ra3 Rae8 31.Bd3 R4e6 32.Ra4 Rf6 33.Ng4 Rf3 34.Be2 Rf5 35.Bd3 Rf3 36.Be2 Rf5 37.f4 h5 38.Ne5 d6 39.Nf3 c5 Nepomniachtchi,I (2732)-Ding,L (2783) Khanty-Mansiysk 2017 1/2-1/2 (82)] 13.0-0 Bxe5 14.Bxe5 Qxe5 15.Qxe5 Rxe5 16.cxd5 Bxf1 17.Kxf1 cxd5÷ Is considered to be a very balanced endgame. Personally I prefer Black's chances]

10...d6 11.Qf2 Nf6 [The N has to be rerouted]

12.Ba3 Qe6 13.Be2 dxe5 14.Bxf8 Kxf8 15.0-0 exf4 16.Qxf4 Kg7 17.Nc3 Rae8N
[Finally we have the novelty!]



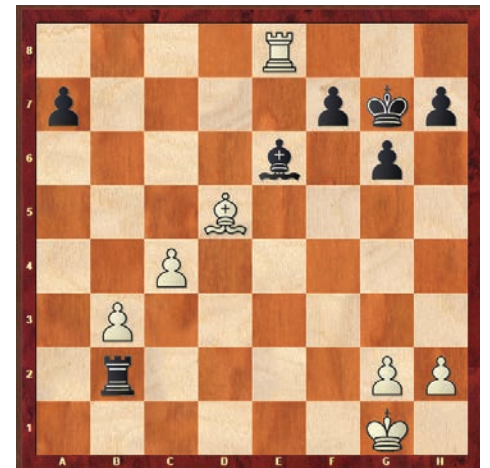
Position after move 20

[17...Rhe8 18.Bf3 Rad8 19.Rad1 Rxd1 20.Rxd1 Bc8³ 1/2-1/2 (47)]

18.Bf3 Qe3+ 19.Qxe3 Rxe3 20.Na4 Bc8= [Finally Black's worst piece gets a makeover. The B is now headed towards greener pastures]

21.Bxc6 Rd8 22.Rae1 Rxe1 23.Rxe1 Rd2 24.Nc3 [24.Re7 was more precise 24...Bd7 25.Bd5 Be8 26.Rxc7 Nxd5 27.cxd5 Rxd5 28.Nc3 (28.Rxa7? Rd1+ 29.Kf2 Rd2+μ Despite White's material advantage, the cooperation between the active R and the B is very potent and could prove dangerous for White's K) 28...Rd2 29.a4 Rb2 30.Rxa7 Rxb3 31.Rc7 Kf6=]

24...Rc2 25.Nb5 Rxa2 26.Nxc7 Rb2 27.Ne8+ Nxe8 28.Rxe8 Be6 29.Bd5!
[White safely simplifies into a theoretically drawn endgame]



29...Bxd5 30.cxd5 Rxb3 31.d6 Rd3 32.Ra8 Rxd6 33.Rxa7 Rd2 34.Ra6 g5 35.h3 h5 36.Ra5 Kg6 37.Rb5 Ra2 38.Kf1 Ra6 39.Kf2 f5 40.Rb8 Ra2+ 41.Kf3 Ra3+ 42.Kf2 g4 43.hxg4 hxg4 44.g3 Ra2+ 45.Kf1 Ra1+ 46.Kf2 Ra2+ 47.Kf1

1/2-1/2



CROSS TABLE

#GrandChessTour

AFTER ROUND 7



POS.	PLAYER	1	2	3	4	5	6	7	8	9	10	SCORE
1	GM LEVON ARONIAN 2787 [URS]		.5	.5		0	.5		1	1	1	4.5
2	GM M. VACHIER-LAGRAVE 2789 [URS]	.5			1	.5	.5	.5	1		.5	4.5
3	GM VISWANATHAN ANAND 2771 [URS]	.5			.5	1	.5	.5		1	.5	4.5
4	GM MAGNUS CARLSEN 2850 [URS]		0	.5		.5	1	.5	1		.5	4
5	GM FABIANO CARUANA 2774 [URS]	1	.5	0	.5		.5		.5	.5		3.5
6	GM SERGEY KARJAKIN 2770 [URS]	.5	.5	.5	0	.5		1		.5		3.5
7	GM PETER SVIDLER 2744 [URS]		.5	.5	.5		0		.5	.5	.5	3
8	GM WESLEY SO 2781 [URS]	0	0		0	.5		.5		1	.5	2.5
9	GM IAN NEPOMNIACHTCHI 2744 [URS]	0		0		.5	.5	.5	0		1	2.5
10	GM HIKARU NAKAMURA 2798 [URS]	0	.5	.5	.5			.5	.5	0		2.5



SINQUEFIELD CUP

PLAYER MATCHUPS

#GrandChessTour

ROUND 8



WHITE	PLAYER	VS	PLAYER	BLACK
	GM I. NEPOMNIACHTCHI 2767 [URS]	—	GM MAGNUS CARLSEN 2850 [URS]	
	GM LEVON ARONIAN 2787 [URS]	—	GM PETER SVIDLER 2744 [URS]	
	GM FABIANO CARUANA 2774 [URS]	—	GM HIKARU NAKAMURA 2798 [URS]	
	GM SERGEY KARJAKIN 2770 [URS]	—	GM WESLEY SO 2781 [URS]	
	GM VISWANATHAN ANAND 2771 [URS]	—	GM M. VACHIER-LAGRAVE 2789 [URS]	

SPONSORED BY:

explore **st.louis**

DAILY CHESS PUZZLE

BY DANNY MACHUCA

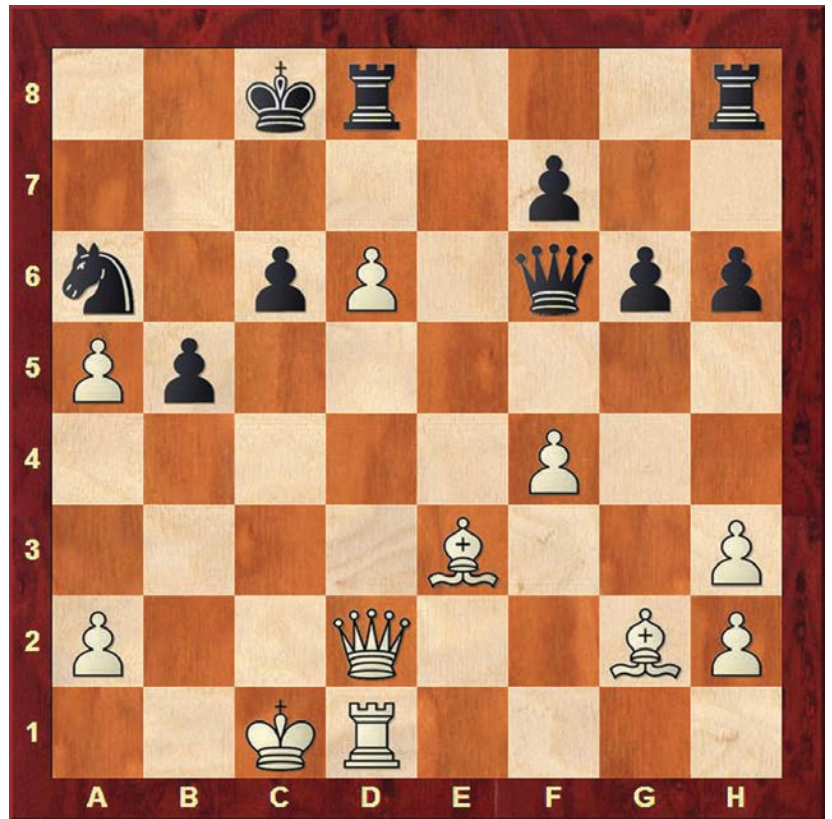
Submit your solution to our front desk staff for a chance to win a gift card to the store at the Chess Club and Scholastic Center of Saint Louis!

Each day, two \$25 gift cards will be drawn among those who submit a correct solution.

Objective: White to move

White: Aronian, Levon
Black: Topalov, Veselin

2014 Sinquefield Cup



SCHEDULE OF EVENTS

TUESDAY, AUGUST 1

4-5:30 PM Autograph Session, Kingside Diner

TUESDAY, AUGUST 1
6 PM Opening Ceremony & *PINNED! A Designer Chess Challenge* Unveiling, Windows on Washington

MONDAY, AUGUST 7
Rest Day

TUESDAY, AUGUST 8
1 PM Round 6

WEDNESDAY, AUGUST 2
1 PM Round 1

WEDNESDAY, AUGUST 9
1 PM Round 7

THURSDAY, AUGUST 3
1 PM Round 2

THURSDAY, AUGUST 10
1 PM Round 8

FRIDAY, AUGUST 4
1 PM Round 3

FRIDAY, AUGUST 11
1 PM Round 9

SATURDAY, AUGUST 5
1 PM Round 4

SATURDAY, AUGUST 12
1 PM Playoff *(If Necessary)*

SUNDAY, AUGUST 6
1 PM Round 5

SATURDAY, AUGUST 12
6 PM Closing Ceremony*

*Private Event, World Chess Hall of Fame

SIDE EVENT HIGHLIGHT

Sinquefield Blitz Tournament

THURSDAY, AUGUST 17

7 Rounds | Game in 5; 0 second delay

Entry Fee
\$10

Registration
6-6:45 PM

Space is limited to the first 40 registrants.

Round 1
7:00 PM

\$250 Prize Fund Guaranteed.
Blitz Ratings will be used for Pairings and Prize purposes.

Free Entry for GMs and IMs. USCF membership required.
Arbiter has the discretion to appoint ratings.